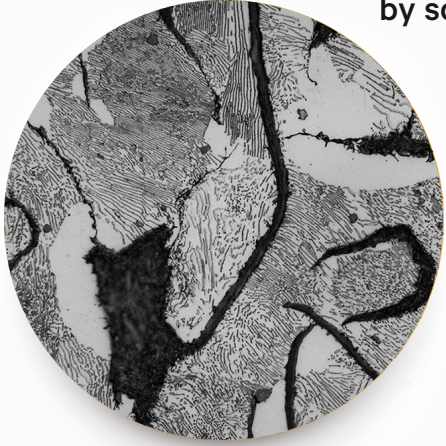


empowered
by science



make your own windmill

what you'll need

- Printable template on A4 paper
- Scissors (Parental supervision may be required)
- Glue stick
- Crayons or markers
- Pencil with eraser
- Push pin (Parental supervision may be required)

instructions

1. Print out template provided on an A4 paper.
2. Colour in your chosen design or get creative and design it yourself.
3. Cut along the black outline (—) to get a square.
4. Cut along the dotted lines (••••) to make 4 slits. This will also give you 8 tips marked 1 to 8 clockwise.
5. Take the odd-numbered tips and glue them to the centre of the square without creasing the paper.
6. Insert a push pin into the centre of the pinwheel and wiggle it around to slightly enlarge the hole.
7. Insert the pushpin with the pinwheel into the pencil's eraser, but not too tightly such that there is space for the pinwheel to spin freely.
8. Blow at the edges of the pinwheel to make it spin!

