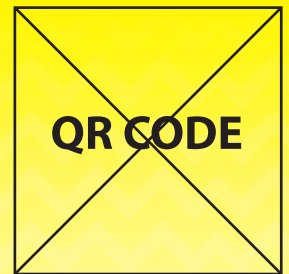


Science Play



Suggested Activities For Educators

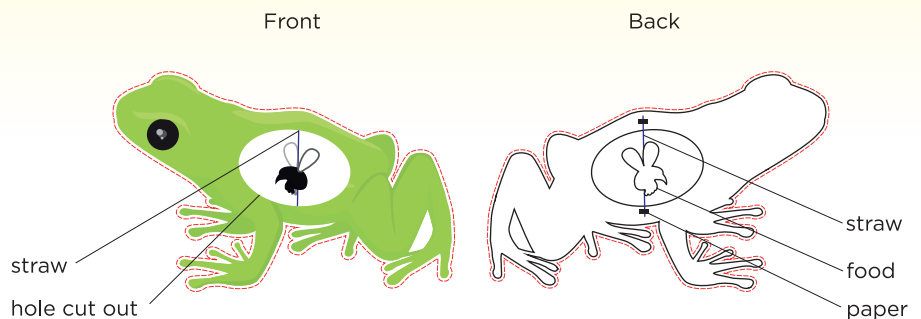


Extend your students' learning after their visit to KidsSTOP™ with the activity provided!

Animal Kingdom Make an interactive animal diet board

What you will need

- Printer
- A3 or A4 size art paper
- Dowel/Straw
- Tapes



Interactive animal diet board after assembly

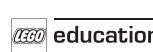
PROCEDURE

1. Scan the QR code to retrieve the images.
2. Print the images on A3 or A4-size paper and cut them out.
3. Paste two slips of paper at the back of the animal images, allowing space for the dowel/ straw to be slotted in.
4. Attach a dowel/straw by slotting it through the opening of the paper slips as shown.
5. Stick the images of the animal's food on the dowel/stick in the middle of the animal.
6. Share with children what the animals eat.



Brought To You By
Science Centre Singapore

Partners:



© /kidsstopsg /kidsstopsingapore
www.science.edu.sg/kidsstop

21 Jurong Town Hall Road, Singapore 609433



QUESTIONS TO ASK

- What food does this animal eat?
- Which animal(s) eat(s) both plants and meat?
- Why do you think animals need food?



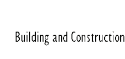
SCIENCE CONCEPTS

- Like us, animals need food to survive, but different animals eat different types of food.
- Animals that only eat plants are known as herbivores, (e.g. rabbits, fruit bats), while animals that only eat meat are known as carnivores (e.g. cats, otters).
- Animals that eat both plants and meat are known as omnivores (e.g. dogs, orang utans).



Brought To You By
Science Centre Singapore

Partners:



/kidsstopsg /kidsstopsingapore
www.science.edu.sg/kidsstop

21 Jurong Town Hall Road, Singapore 609433

