

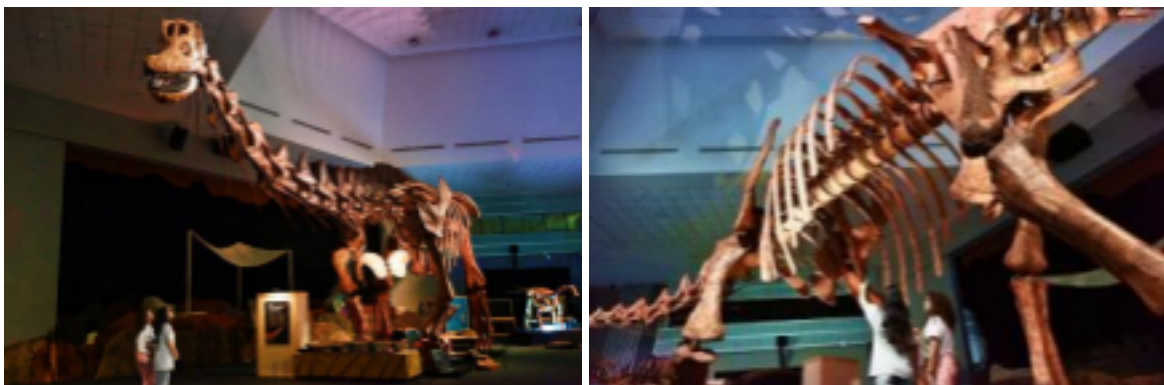
Singapore's Ultimate Prehistoric Adventure Begins 11 October at Science Centre Singapore

DINOSAURS / EXTINCTIONS / US finally arrives with 400 million years of Earth's history, rare fossils and a spectacular 40-metre-long dinosaur



Singapore, 9 October: The wait is nearly over. Science Centre Singapore, in collaboration with the Lee Kong Chian Natural History Museum, Faculty of Science, at the National University of Singapore, is thrilled to unveil ***DINOSAURS / EXTINCTIONS / US*** on 11 October 2025. This spectacular showcase spans 3,000 square metres and brings together two world class exhibitions—***Dinosaurs of Patagonia*** and ***Six Extinctions***—by Museo Paleontológico Egidio Feruglio and Gondwana Studios, respectively. Through the exhibition, guests will discover how life on Earth survived its greatest challenges across 400 million years of evolution.

Key Highlights



Come face to face with a breathtaking full-scale cast of the *Patagotitan mayorum*, one of the largest dinosaurs ever discovered. Stretching 40 metres long and weighing approximately 57 tonnes, this colossal titan represents one of the most significant paleontological discoveries of recent decades.

Unearthed in Argentina's Chubut Province in 2014, it remains the most complete skeleton of its kind ever found, reshaping our understanding of dinosaur size.



Encounter the fearsome *Tyrannosaurus rex* known as "Scotty". At 13 metres long, this awe-inspiring full-scale cast showcases the largest *Tyrannosaurus rex* specimen ever discovered. This prehistoric predator dominated the ancient landscape with its massive frame and bone-crushing bite and will offer guests an unforgettable glimpse into the apex of dinosaur evolution and the dramatic mass extinctions that shaped our planet's history.



Bringing the theme of extinction closer to home, the exhibition spotlights Singapore's own biodiversity challenges. Curated by the Lee Kong Chian Natural History Museum, this poignant section reveals once-extant native species that are now locally extinct and showcases the measures being employed to safeguard today's remaining species.

The world's largest living woodpecker species, the great slaty woodpecker (*Mulleripicus pulverulentus*), once called Singapore home, with historical records showing it successfully bred here. However, the species disappeared as development claimed the large old-growth trees essential for its nesting and foraging. Today, occasional sightings occur, though these magnificent birds are likely vagrants from neighbouring Malaysia rather than residents. Featured within *DINOSAURS / EXTINCTIONS / US*, this poignant story underscores how habitat loss has driven extinctions in modern times, while giving guests an opportunity to view this elusive species up-close.



Interactive adventures await guests throughout the exhibition, offering hands-on fun for all ages. Guests can test their power against mighty dinosaurs in the *Test Your Strength* challenge. Curious minds can also reimagine prehistoric creatures at *Imagine Dinosaurs* by adding muscles, textures, colours to dinosaur skeletons, while *Digital Fossil Dig* will deliver the thrill of excavation through a timed touchscreen challenge that mimics real fossil hunting. Along the way, guests can collect stamps at stamping stations throughout the exhibition, gradually unveiling a vibrant prehistoric scene.

"*DINOSAURS | EXTINCTIONS | US* represents far more than a showcase of prehistoric life. It is a powerful narrative about survival, a call to examine Earth's deep history and consider our role in shaping what comes next. Through stunning fossils and immersive experiences, we strive to kindle fascination and encourage decisive action in response to our modern biodiversity emergency. We are honoured to collaborate with the Lee Kong Chian Natural History Museum in crafting a premier STEM experience for all," said Ms Tham Mun See, Chief Executive of the Science Centre Board.

"Dinosaurs and past mass extinctions carry compelling messages of global magnitude. At the same time, the Lee Kong Chian Natural History Museum brings a uniquely Singaporean perspective to *DINOSAURS | EXTINCTIONS | US*, highlighting native species we have lost in the current Sixth Mass Extinction in which humans are both part of the cause and part of the solution. By highlighting cutting edge research methods used to study specimens in our collections and trace past extinction events, we showcase science-based approaches that can inform the prevention of future biodiversity loss—and shine a light on Singapore's efforts in this area. This partnership with Science Centre Singapore allows us to amplify the Museum's education and outreach, making the science of extinction and conservation more relatable, and more urgent, for all Singaporeans," said Associate Professor Darren Yeo, Head of Lee Kong Chian Natural History Museum.

"Each fossil tells a story of discovery and perseverance. Through *Dinosaurs of Patagonia*, which is featured within *DINOSAURS | EXTINCTIONS | US*, we invite the world to explore how science connects us to our past — and to the planet we share. Presented internationally by Akrom Pty Ltd (Australia), *Dinosaurs of Patagonia* celebrates decades of Museo Paleontológico Egidio Feruglio's pioneering research and scientific leadership, sharing the legacy of Argentine palaeontology with audiences around the world," said Dr. Rubén Cúneo, Director, Museo Paleontológico Egidio Feruglio.

"As part of *DINOSAURS | EXTINCTIONS | US*, *Six Extinctions* will take visitors on a journey through Earth's most dramatic moments of change, moments that wiped out most life yet ultimately shaped the planet we know today. By exploring the causes and consequences of the five great mass extinctions, and our own role in the ongoing sixth, the exhibition connects the past to the present day, showing that extinction is both a story of loss and renewal. With a large collection of rare fossils, models, dinosaur skeletons and science-based storytelling, we invite visitors to reflect on humanity's impact, and our power to influence what survives next," said Peter Norton, Director, Gondwana Studios.

Plan your Visit

DINOSAURS / EXTINCTIONS / US launches at the Annexe, Science Centre Singapore on 11 October 2025 and tickets are available [here](#).

Ticket Prices:

Singaporeans and Permanent Residents*

- Adults: \$29.90
- Children: \$25.90

Standard Admission

- Adults: \$39.90
- Children: \$35.90

*Ticket prices for Singaporeans and Permanent Residents are inclusive of complimentary admission to Science Centre Singapore.

- END

For enquiries, please contact:

Zeno Group Singapore

ScienceCentrePR@zenogroup.com

Nicole Tan

Nicole.Tan@zenogroup.com

Science Centre Singapore

Jyotika Thukral

Jyotika_THUKRAL@science.edu.sg

6425 2541

Rishiikanthan Vijayahkumar

Rishiikanthan_VIJAYAHKUMAR@science.edu.sg

About Science Centre Singapore

Science Centre Singapore, an informal educational institution and leading regional Science Centre, along with its group of attractions, brings out the wonders of science, technology, engineering and mathematics (STEM) through its unique blend of exhibitions, educational programmes and events. A custodian of creativity and innovation, Science Centre Singapore has captured the evolution of scientific developments for more than four decades. The Centre and its partners have played a pivotal role in transforming the way students and the public interact with and learn about STEM. Since 1977, the Centre has welcomed over 30 million visitors and inspired them with more than 1,000 exhibits spread across 14 galleries and outdoor spaces.

The Centre's group of attractions include Omni-Theatre, Snow City and KidsSTOP™. The Omni Theatre, Southeast Asia's first 8K 3D digital theatre with a 23m wide seamless dome screen, is an immersive destination like no other. Snow City is Singapore's only permanent indoor snow centre

offering an Arctic inspired experience at Singapore's first ice gallery and snow chamber. KidsSTOP™ - Where every child gets to Imagine, Experience, Discover and Dream - is Singapore's first children's science centre offering an enriching experience through purposeful play for children aged 18 months to 8 years old. For more information, please visit www.science.edu.sg.

About Lee Kong Chian Natural History Museum, Faculty of Science, National University of Singapore

The Lee Kong Chian Natural History Museum is Singapore's only natural history museum, and a leading institution in Southeast Asian biodiversity research, education, and outreach. Located at the National University of Singapore, the Museum houses over a million natural history specimens, field notes, drawings, and photographs from Southeast Asia in its iconic rock-shaped building. As a custodian of Singapore's natural heritage, we not only seek to share knowledge with the public, but also recognise the value of our collections among the scientific community which supports biodiversity research in Singapore and in the region.

For more information, visit the Museum's [website](#), [Facebook](#), [Instagram](#), [X](#), [YouTube](#) and [LinkedIn](#).

About Museo Paleontológico Egidio Feruglio (MEF)

The Museo Paleontológico Egidio Feruglio (MEF), based in Trelew, Patagonia, Argentina, is one of the world's leading institutions in paleontological research, renowned for its groundbreaking discoveries in South America. MEF's team of scientists has uncovered some of the most significant fossils of recent decades, including Patagotitan mayorum—the largest dinosaur ever discovered.

MEF is the scientific and curatorial force behind Dinosaurs of Patagonia, the international touring exhibition that brings together original fossils and life-sized reconstructions of Patagonia's most extraordinary prehistoric giants. Through this exhibition, MEF shares its pioneering research with global audiences, combining scientific excellence with public engagement.

The MEF Collection houses more than 40,000 fossils in paleobotany, paleovertebrates, paleoinvertebrates, and ichnology, and continues to grow. Its mission is to preserve, protect, and safeguard paleontological heritage."

About Gondwana Studios Pty Ltd

Gondwana Studios is a leader in touring natural history and science exhibitions. With a mission to connect people with science and the story of our planet, we partner with museums, science centres, and cultural institutions to deliver engaging, educational, and scientifically accurate experiences. From prehistoric life to pressing environmental issues, our exhibitions spark curiosity and inspire a deeper understanding of the natural world. Based in Australia and operating internationally, Gondwana Studios brings the story of life on Earth to audiences worldwide.