

KidsSTOP™

2023/2024
EDITION

BIRTHDAY PARTY

CATALOGUE



Brought To You By
Science Centre Singapore

PACKAGE

**\$60 PER CHILD
INCLUDES:**



Thematic dessert table decoration



1 facilitated science activity based on the theme



KidsSTOP™ science kit for each payable child



KidsSTOP™ t-shirt for birthday child



E-invitation card for guests



Play time at KidsSTOP™ gallery



2 complimentary KidsSTOP™ admission adult tickets for each payable child



THEME 1 | Wonder Lab

DESSERT TABLE

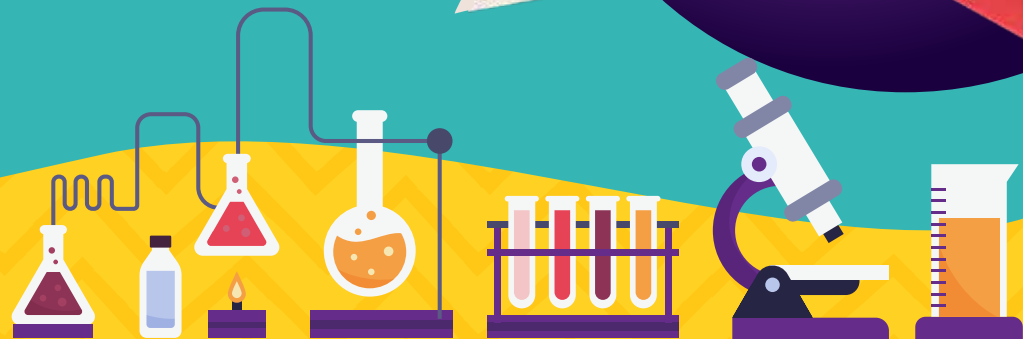


ACTIVITIES

Lava Lamp



Glow-in-the-dark Slime



THEME 2 | Dinomite Delight

DESSERT TABLE



ACTIVITIES

Fizzy Dino Egg



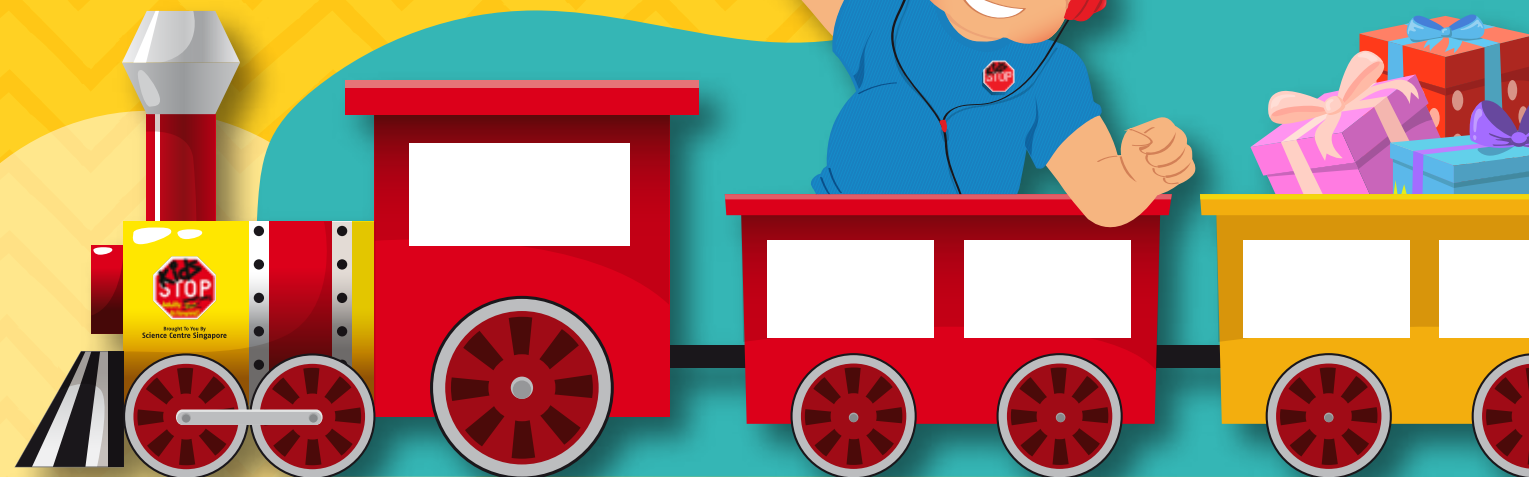
Dino Fossil Plaster



VENUE | KidsSTOP™ Train Station



*Dessert table decorations will depend on the theme selected for the party.



ITINERARY

There are 2 timeslots for birthday parties:

AM PARTY

- 🕒 **Play Time: 10.30am – 11.10am**
Guests may visit the gallery or have snacks while waiting for the activities to start.
- 🕒 **Facilitated Activity: 11.15am – 12.00pm**
At 11.10am, staff will announce for everyone to gather at the Train Station for a science activity and to sing a birthday song!
- 🕒 **End of Party: 12.30pm**
Guests to wrap up the birthday party at the Train Station and vacate the room.

PM PARTY

- 🕒 **Play Time: 2.30pm – 3.10pm**
Guests may visit the gallery or have snacks while waiting for the activities to start.
- 🕒 **Facilitated Activity: 3.15pm – 4.00pm**
At 3.10pm, staff will announce for everyone to gather at the Train Station for a science activity and to sing a birthday song!
- 🕒 **End of Party: 4.30pm**
Guests to wrap up the birthday party at the Train Station and vacate the room.



RULES AND REGULATIONS

- Upon confirmation, there will be no cancellation, refund or reduction of participant numbers.
- Alcohol consumption is strictly not allowed.
- Adhesives (e.g. glue and tapes) and pins are not allowed for hanging decorations on the wall. Any damage to the party venue will be chargeable.
- KidsSTOP™ will not provide catering, food or decorations. KidsSTOP™ will only provide the thematic dessert table.
- Guests must vacate the Train Station venue by 12.30pm (AM) or 4.30pm (PM) for sanitisation purposes.
- The host is responsible for tagging all guests with a wristband for identification purposes and admission to KidsSTOP™.





MORE INFO

ENQUIRY

KidsSTOP_Events@science.edu.sg

 [kidsstopsg](#)  [kidsstopsingapore](#)  [sciencetringsingapore](#)

www.science.edu.sg/kidsstop